



KC Kali Vista – Plot 2

Designers and Builders of Luxury Homes At Affordable Prices

Description

A development of two detached 3-bedroom villas on plot of 2,391m²

The villa enjoys spectacular views of Souda Bay and the White Mountains.

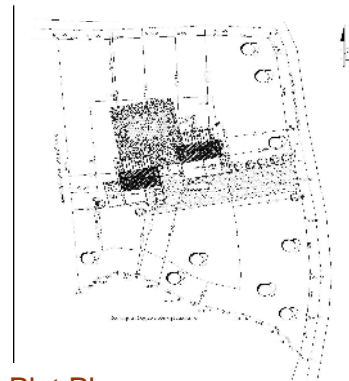
The village of Plaka is only a short drive away, as is the resort of Almerida with its beautiful sandy beach, tavernas and shops.



Views from the area



Similar Villa



Plot Plan

Details

Location:	Kokkino Chorio
Location Type:	Village Property
Property Type(s):	Detached Villa
Property Size(s):	100m ²
Plot Size(s):	2,391m ²
Prices From:	

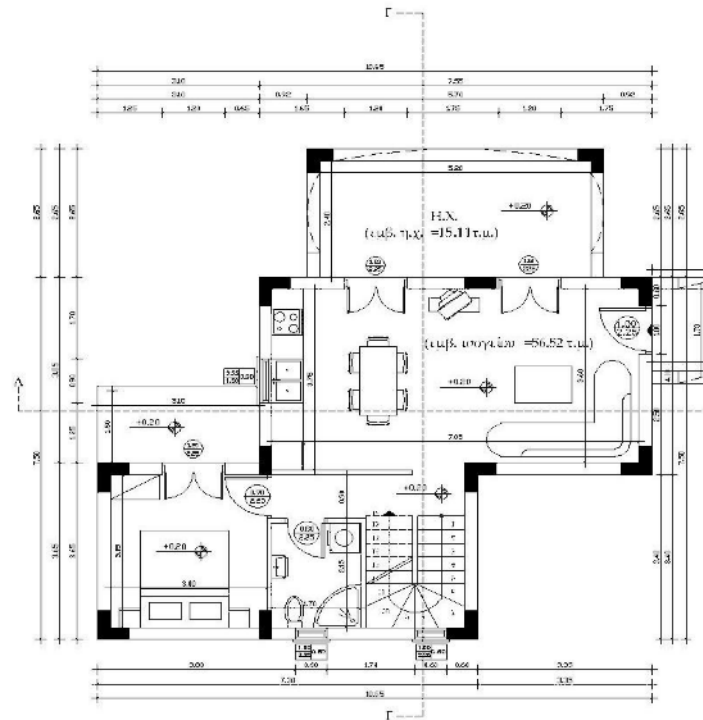
Your Piece Of Paradise... Your Peace Of Mind

www.newcenturyhomes.gr

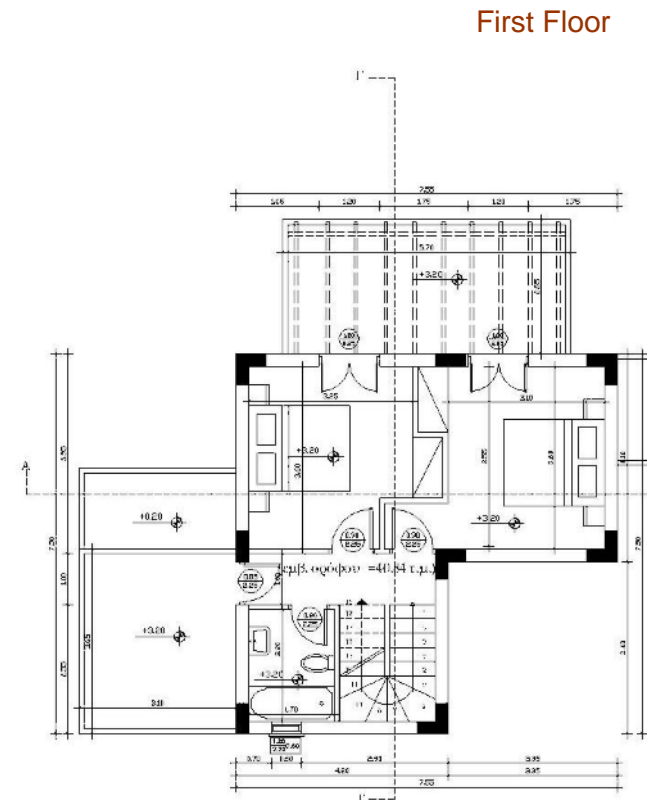
Features

- ❑ Three bedrooms/
two bathrooms
- ❑ Solar panel
- ❑ Fully fitted kitchen
units
- ❑ Fully fitted
bathrooms and
accessories
- ❑ Ceramic floor and
bathroom tiles
throughout the
property
- ❑ Fitted wardrobes in
each bedroom
- ❑ Air conditioning
included in
bedrooms
- ❑ Blue aluminium
window frames &
shutters
- ❑ Tiled external patio
areas/balconies
- ❑ Underfloor pipes
for central heating

Floor Plans



Ground Floor



First Floor